

Practice Questions

1. Which of the relations below is a function?

Choose:

- ☐ $\{(1,1), (2,1), (3,1), (4,1), (5,1)\}$
- ☐ $\{(2,1), (2,2), (2,3), (2,4), (2,5)\}$
- ☒ $\{(0,2), (0,3), (0,4), (0,5), (0,6)\}$



2. Given the relation $A = \{(5,2), (7,4), (9,10), (x, 5)\}$. Which of the following values for x will make relation A a function?

Choose:

- ☐ 7
- ☐ 9
- ☒ 4



3. The graph of a relation is shown at the right. Is this relation a function?

Choose:

- ☐ Yes
- ☒ No

$$y = 1/(e^x)$$



4.



Is the relation depicted in the chart below a function?

X	0	1	3	5	3	9
Y	8	9	10	6	10	7

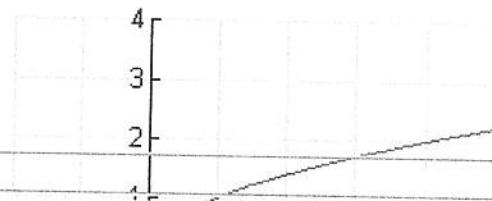
Choose:

- ☐ Yes
 - ☐ No
 - ☐ Cannot be determined from a chart
-

5. The graph of a relation is shown at the right.
Is the relation is a function?

Choose:

- ☐ Yes
 - ☐ No
 - ☐ Cannot be determined from a graph
-



6.



Which of the following relations is a function?

Choose:

- ☐ $x^2 + y^2 = 16$
- ☐ $y = \pm\sqrt{x+4}$
- ☐ $y = |x+1| + 5$